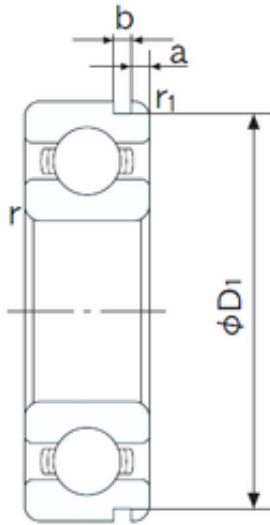




SKF BEARING MANUFACTURING CO.,LTD.



50 mm x 110 mm x 27 mm NACHI 6310N deep groove ball bearings

Bearing No. 6310N

6310N Bearing 2D drawings and 3D CAD models

Size	50x110x27 mm
Bore Diameter	50 mm
Outer Diameter	110 mm
Width	27 mm
d	50 mm
D	110 mm
B	27 mm
C	27 mm
a	3.28 mm
b	2.7 mm
r min.	2 mm
r1 min.	0.5 mm
D1	106.81 mm
Weight	1.07 Kg
Basic dynamic load rating (C)	62 kN
Basic static load rating (C0)	38,1 kN
(Grease) Lubrication Speed	6200 r/min
Bore Type	Cylindrical Bore
Enclosure	Open
Configuration	Single Row
Bore Size	50 mm
Outside Diameter	110 mm
Width	27 mm
Fillet Radius/Chamfer	2 mm
r1	0.5 mm



SKF BEARING MANUFACTURING CO.,LTD.

Groove Width	2.7 mm
Groove Diameter	106.8 mm
a (max)	3.3 mm
Dynamic Load Rating	62,000 N
Static Load Rating	38,100 N
Limiting Speed - Grease	6,400 rpm
Limiting Speed - Oil	7,500 rpm
Factor fo	13.1
Radial Clearance	0.006 to 0.023 mm
da (min)	60 mm
Da (max)	100 mm
Dx (min)	118 mm
ra (max)	2 mm
Cy (max)	5.4 mm